

### 3.3. Various stages of the installation

#### 3.3.1. Mounting the sauna heater to the wall

With the adjustment legs driven in, the mounting height of the sauna heater wall mount is 750mm from the floor.

The adjustment legs can be adjusted 15mm in case the floor is inclined. After the mounting, check that both adjustment legs are evenly against the floor.

The distance between the holes for the mount in the wall is 240mm.

Parts for wall mounting:

- sauna heater locking wedges (A) 2 pcs
- wall fastening (B) 1 pc
- sheet metal screw 4.2 x 13mm 2 pcs
- build screw 6 x 40mm 2 pcs

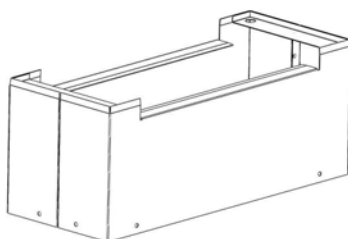
Pass the locking wedges (A) through the holes in the heater so that the ingoing part is turned upwards.

The wall mount (B) is attached to the wall so that the holes where the locking wedges are secured to are upwards.

The mount may also be attached directly to the sauna heater. Mark the locations of the screws on the wall and, if necessary, drill small holes and mount the sauna heater then to the wall with the screws provided.

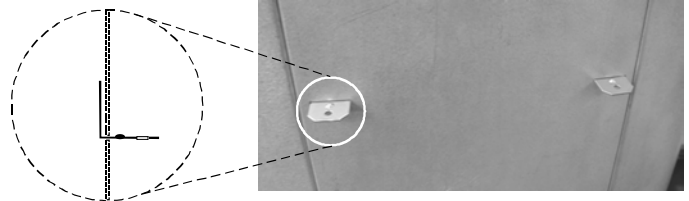
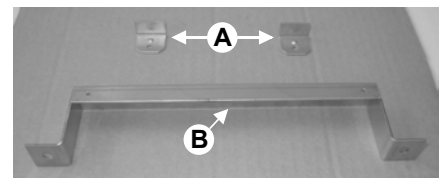
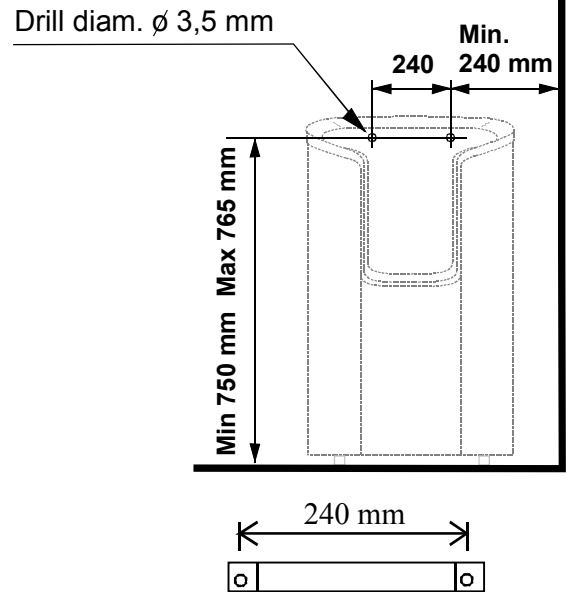
The picture shows how the wall mount should be attached to the sauna heater. The locking wedges are attached to the wall mount with the sheet metal screws.

Image 1 Mounting the sauna heater to the wall



An additional foot stand (0043105) is available as an accessory. It will rise the heater 150 mm from the floor.

The installation instructions are enclosed in the packaging.



### 3.3.2. HELO CAVA – Assembly instructions for the heater soapstones

Before the installation of the soapstones the heater has to be fixed to the wall.  
See the instructions on page 6.



Take the front soapstones out from the package.  
The stone to be placed as the lowest has rounded lower corners. Pass the stones carefully along the guide. The other (4 pcs) soapstones have even edges and therefore it does not matter in which order they are placed.



Install the intermediate pieces (8) of the soapstones so that the projection will always stay on the stone i.e. there will always be an air gap between the stones.

The metal pieces are placed on each side between each stone (except the uppermost).



Once the front soapstones have been installed, place the stones meant to be inside the heater (approx. 30kg). Some stones also have to be placed on the heating elements.

**NOTE! No heater stones should be placed between the first heating element and the front soapstones. The heater must not be used without the front soapstones or when the stones have cracks on them.**

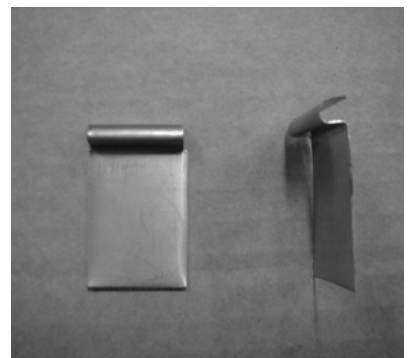
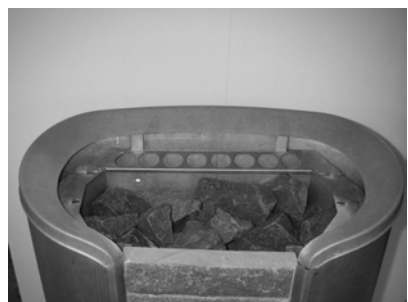
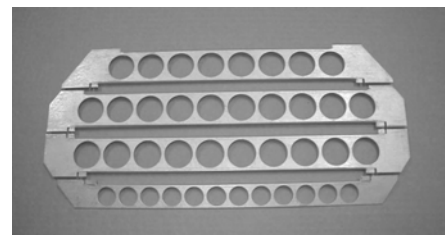


Image 2 installation of the soapstones

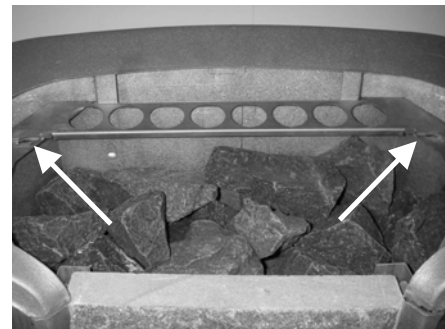


After installing the sauna rocks, install the metallic supports above them.

The illustration shows the order.

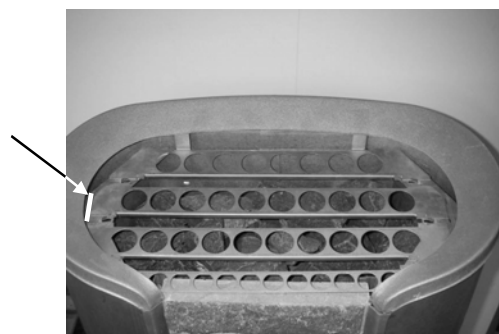


The heater body has both vertical and end limiters which prevent the movement of the soapstone both vertically and horizontally once they are installed. Install the metallic supports between the vertical limiters. The soapstones also remain between the vertical limiters.



The illustration shows the installed supports.

End limiter



The soapstones are installed as follows:

- Install the upper stone first.
- Place as shown in the illustration: first one of the ends under the edge; push the stone then under the other edge until it stops in the end limiter.



NOTE!

The stone has to remain behind the vertical limiter.



Image 2,1 installation of the soapstones

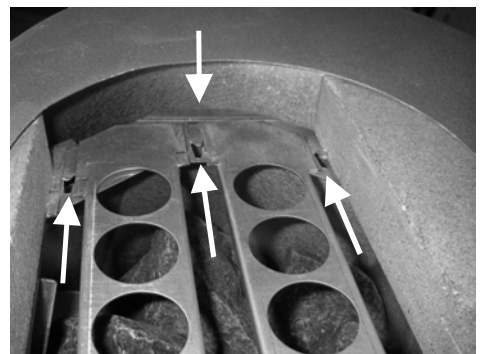
Install the round-edged stone next. Push the other end under the edge and then push the stone along the support plate against the end limiter.



In the illustration the round edge stone and the soapstone furthest at the back remain where they are.



The illustration shows both the vertical and horizontal limiters of the soapstones.



Install the middle stones. The length of the middle stones is 405mm. Push the stone first under the right edge and then along the support plate under the left edge against the end plate.



Finally check that the soapstones are between the end limiters and that the gaps between the stones are equal.



Image 2,2 installation of the soapstones